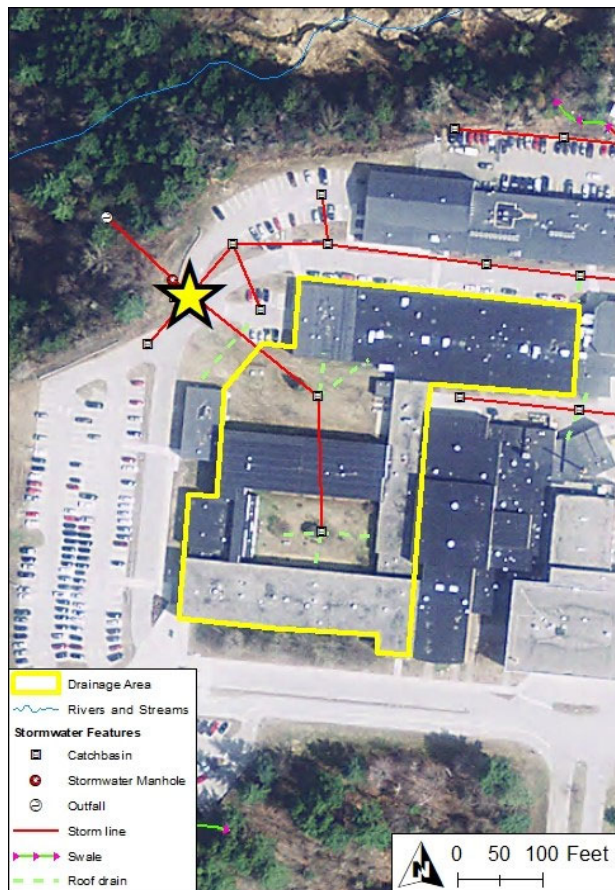


## Hyde Park SWMP – Final BMP Summary Sheets

<b>Site Name:</b>	Lamoille Union Schools - West	<b>BMP ID #: 1</b>
<b>Approximate Address:</b>	736 VT Route 15 W, Hyde Park, VT, 05655 US	
<b>Proposed BMP Type:</b>	Underground Storage/Infiltration	
<b>Proposed BMP Description:</b>		
Implement subsurface storage and infiltration chamber system under northwestern parking lot; system would collect drainage from courtyards and roof drains, and overflow to existing outlet		
<b>Landowners</b>		
Lamoille North Supervisory Union - Lamoille Union Schools		
<b>Feasibility Concerns:</b>		
<b>Other Benefits or Constraints:</b>		
Educational Benefit, Reduce Runoff from Heavily Used Impervious Surfaces		

Proposed BMP details	
Hydrologic Soil Group	A
Drainage Area (ac)	2.62
Impervious Cover (ac)	1.9
Impervious Area (%)	0.7%
Project Cost	\$85,000
TSS Removal (lbs)	588
TP Removal (lbs)	5.07
Volume Managed (ac-ft)	0.27
Volume Infiltrated (ac-ft)	0.27
Proximity to Surface Waters (m)	67.13
Permitting Complexity	Complex
Stormwater Permit?	Yes (4315-9015)

**Site Map**



**Site Photo**

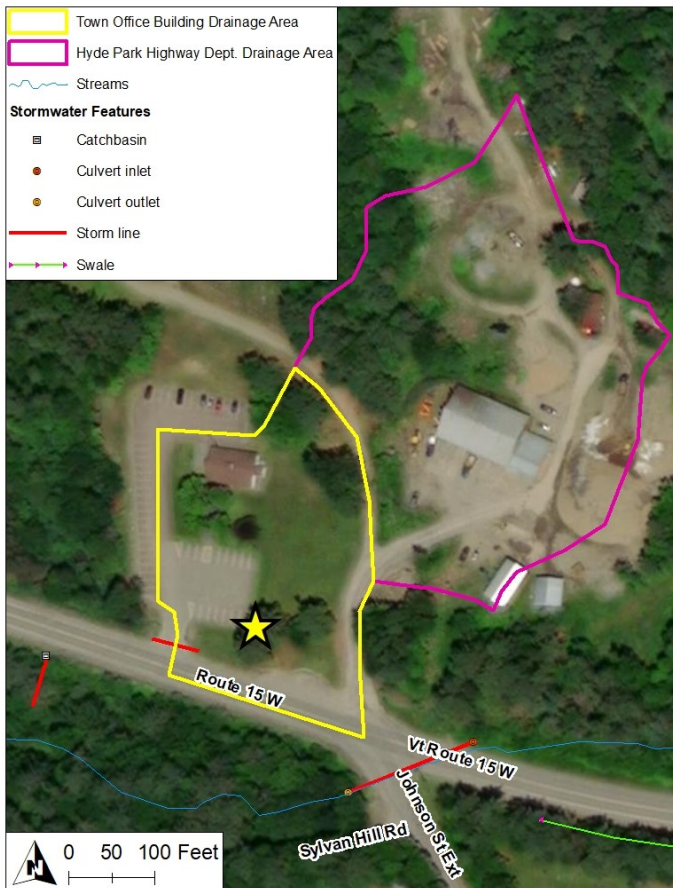


## Hyde Park SWMP – Final BMP Summary Sheets

<b>Site Name:</b>	Town Office Building	<b>BMP ID #: 2</b>
<b>Approximate Address:</b>	344 VT Route 15 W, Hyde Park, VT, 05655 US	
<b>Proposed BMP Type:</b>	Infiltration Basin, Underground Storage/Infiltration	
<b>Proposed BMP Description:</b>		
Implement an infiltration basin in the depressed grassy area between the driveway and VT-15; system would overflow under driveway in location of existing cross culvert; recommended that drainage from the adjacent Highway Department be routed to system		
<b>Landowners</b>		
Town owned land in front of the Town Offices building		
<b>Feasibility Concerns:</b>		
VTrans		
<b>Other Benefits or Constraints:</b>		
Reduce Runoff from Heavily Used Impervious Surfaces		

Proposed BMP details	
Hydrologic Soil Group	A
Drainage Area (ac)	5.20
Impervious Cover (ac)	3.1
Impervious Area (%)	0.6%
Project Cost	\$63,000
TSS Removal (lbs)	1,228
TP Removal (lbs)	8.82
Volume Managed (ac-ft)	0.13
Volume Infiltrated (ac-ft)	0.13
Proximity to Surface Waters (m)	48.85
Permitting Complexity	Minimal
Stormwater Permit?	No

Site Map



Site Photo



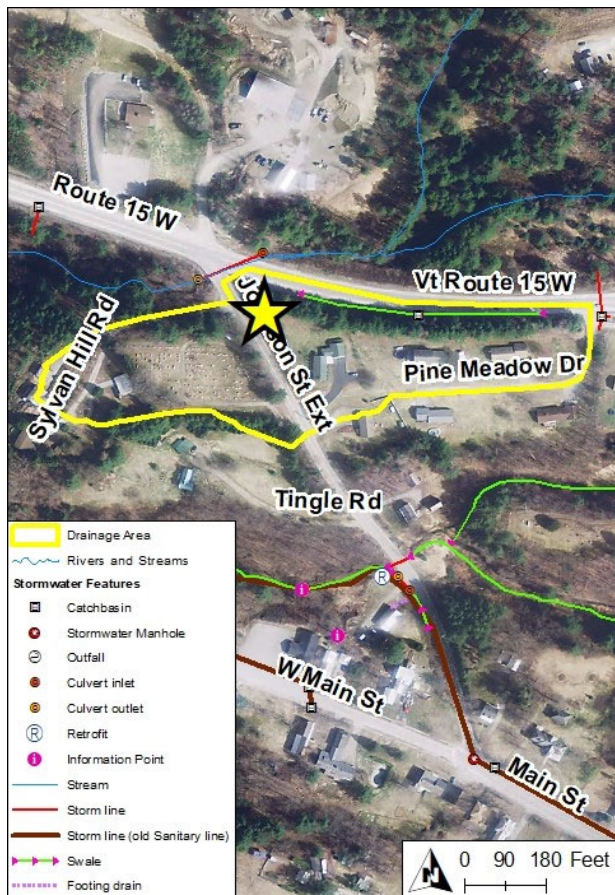


## Hyde Park SWMP – Final BMP Summary Sheets

<b>Site Name:</b>	Sylvan Hill Rd and Johnson St Ext	<b>BMP ID #:</b> 3
<b>Approximate Address:</b>	160 Johnson Street Ext, Hyde Park, VT, 05655 US	
<b>Proposed BMP Type:</b>	Underground Storage/Infiltration, Ditch Improvements	
<b>Proposed BMP Description:</b>	<p>Grade road to slope south towards hillside; add a V-shape, stonelined ditch along southern edge of road; install catchbasin at intersection with Johnson St Ext to direct drainage to greenspace between Johnson St Ext and VT-15; implement a subsurface storage and infiltration system in greenspace; system will overflow to location of existing cross culvert; potential for bank stabilization at location of outlet</p>	
<b>Landowners</b>	Town owned common land	
<b>Feasibility Concerns:</b>	Space, Steep, VTrans	
<b>Other Benefits or Constraints:</b>	Infrastructure Improvement, Reduce Runoff from Heavily Used Impervious Surfaces	

Proposed BMP details	
Hydrologic Soil Group	B
Drainage Area (ac)	6.40
Impervious Cover (ac)	1.9
Impervious Area (%)	0.3%
Project Cost	\$65,000
TSS Removal (lbs)	2,162
TP Removal (lbs)	7.01
Volume Managed (ac-ft)	0.11
Volume Infiltrated (ac-ft)	0.11
Proximity to Surface Waters (m)	15.66
Permitting Complexity	Complex
Stormwater Permit?	No

Site Map



Site Photo

